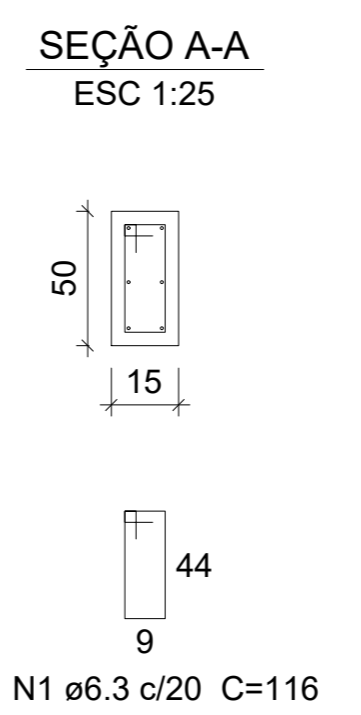
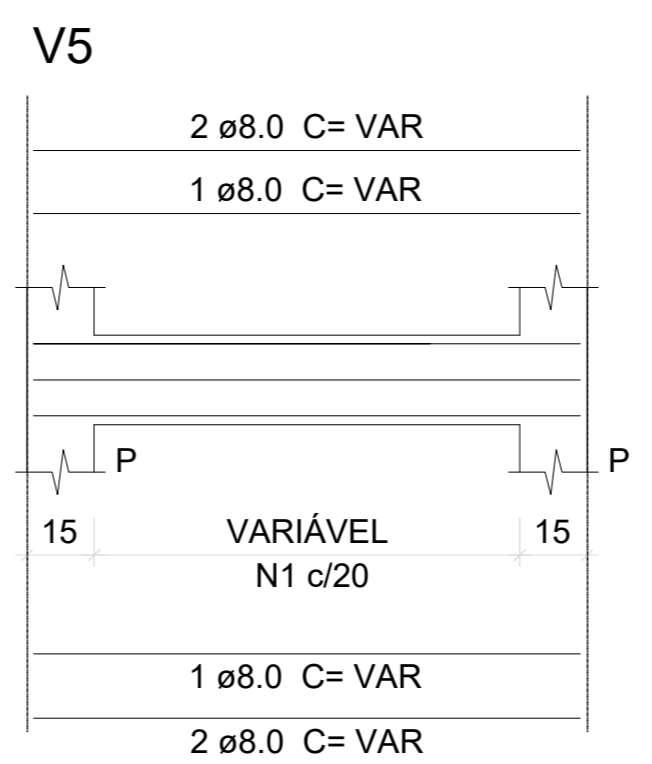
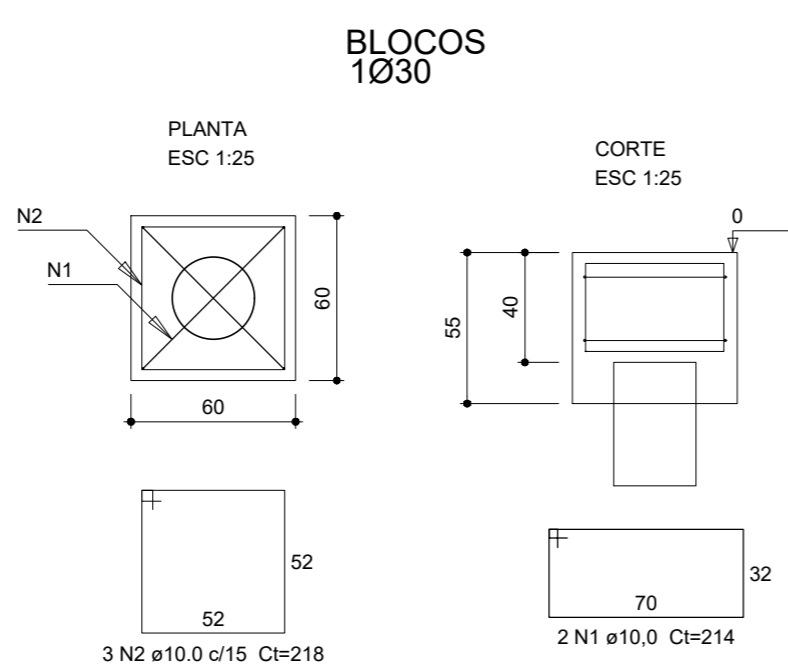
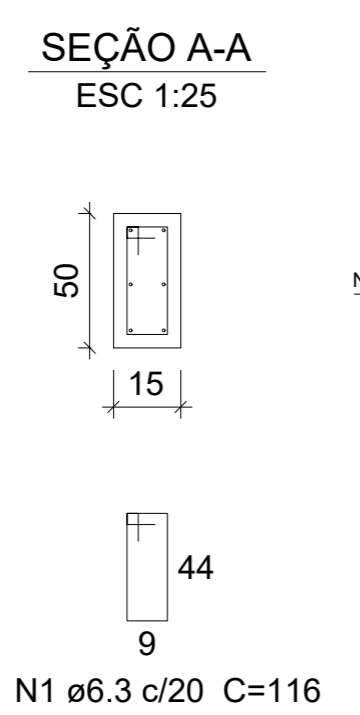
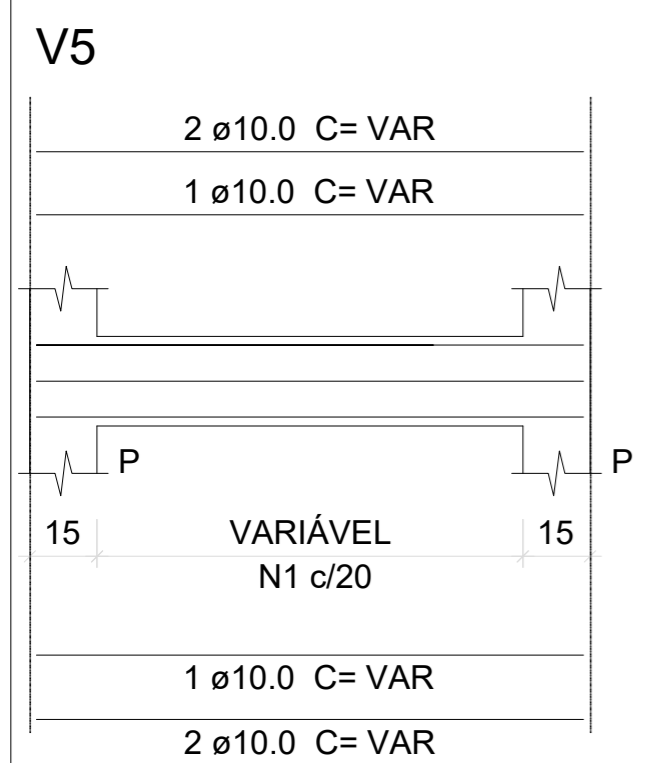
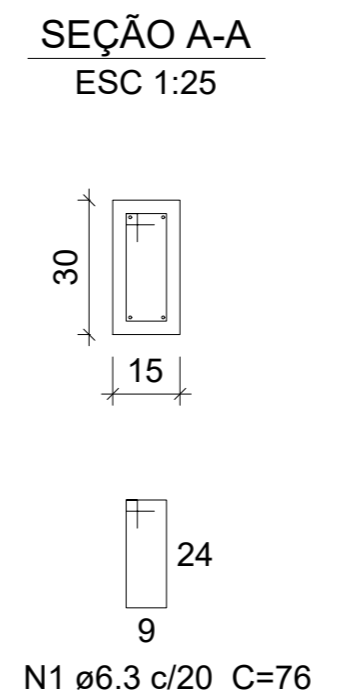
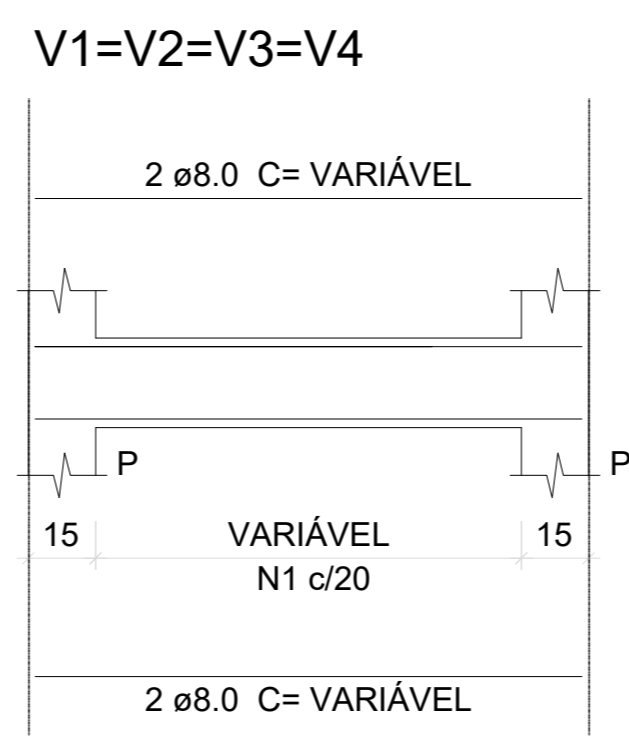
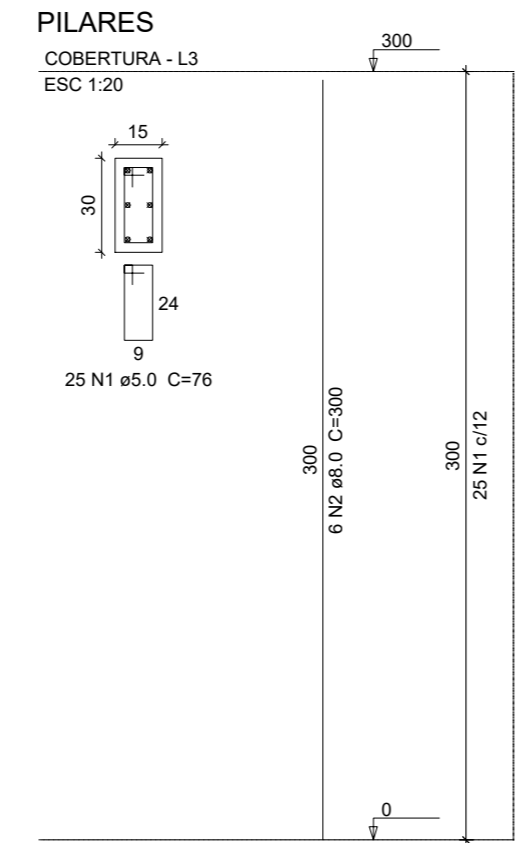
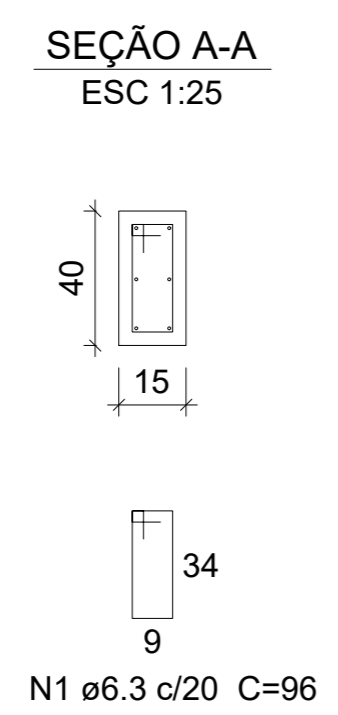
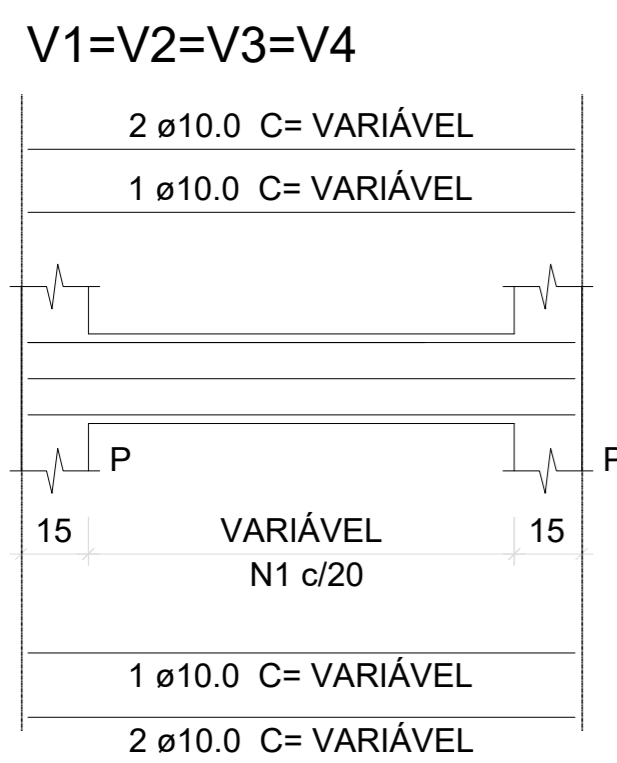


**FORMA VIGAS BALDRAME**  
ESCALA 1:50

**FORMA VIGAS**  
ESCALA 1:50



**Resumo do aço - BLOCO**

AÇO	DIAM (mm)	C.TOTAL (m)	PESO (kg)
CA50	10.0	86,56	53,41
<b>PESO TOTAL (kg)</b>			53,41

**Resumo do aço - PILARES**

AÇO	DIAM (mm)	C.TOTAL (m)	PESO (kg)
CA60	8.0	48.0	18.96
CA50	5.0	152	23.41
<b>PESO TOTAL (kg)</b>			42.37

Volume de concreto (C-30) = 1,58 m³  
Área de forma = 11,52 m²

Volume de concreto (C-30) = 1,08 m³  
Área de forma = 21,6 m²

**Resumo do aço - BALDRAME**

AÇO	DIAM (mm)	C.TOTAL (m)	PESO (kg)
CA60	10.0	214.2	132.16
CA50	6.3	177.84	43.54
<b>PESO TOTAL (kg)</b>			175,73

**Resumo do aço - VIGA**

AÇO	DIAM (mm)	C.TOTAL (m)	PESO (kg)
CA60	8.0	214.2	132.16
CA50	6.3	177.84	43.54
<b>PESO TOTAL (kg)</b>			175,73

Volume de concreto (C-30) = 1,60 m³  
Área de forma = 32,13 m²

Volume de concreto (C-30) = 1,60 m³  
Área de forma = 32,13 m²

APROVAÇÃO



**PREFEITURA MUNICIPAL DE NAVIRAÍ**

OBRA  
**REFORMA ESCOLA JOSÉ MARTINS FLORES**

LOCAL  
R. HORTÊNCIA, 340 - NAVIRAÍ/MS

ÁREA CONSTRUÍDA 2214,50 m²  
ÁREA DO TERRENO 8046,09 m²

RESPONSÁVEL TÉCNICO P/ PROJETO  
**FABIANO COSTA**  
CAU - A30439-5

PREFEITO  
**RHAIZA REJANE NEME DE MATOS**  
CNPJ 03.155.934/0001-90

DISCIPLINA  
**PROJETO ARQUITETÔNICO**

CONTEÚDO  
**PROJETO ESTRUTURAL - AMPLIAÇÃO**

FOLHA  
**4/6**

ESCALA COMO INDICADO DATA ABR/2021 CONVÊNIO COORDENADAS 23°04'06.5"S 54°11'22.5"W