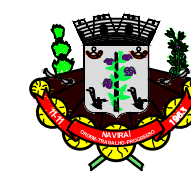
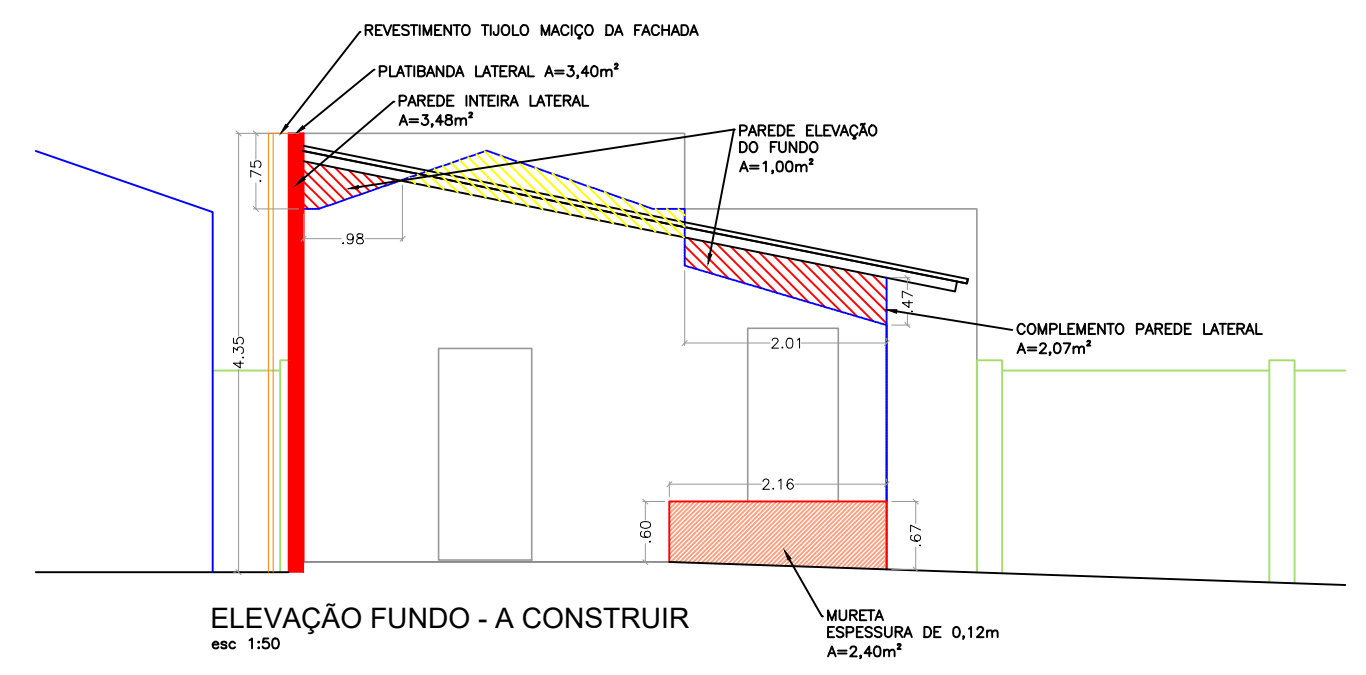
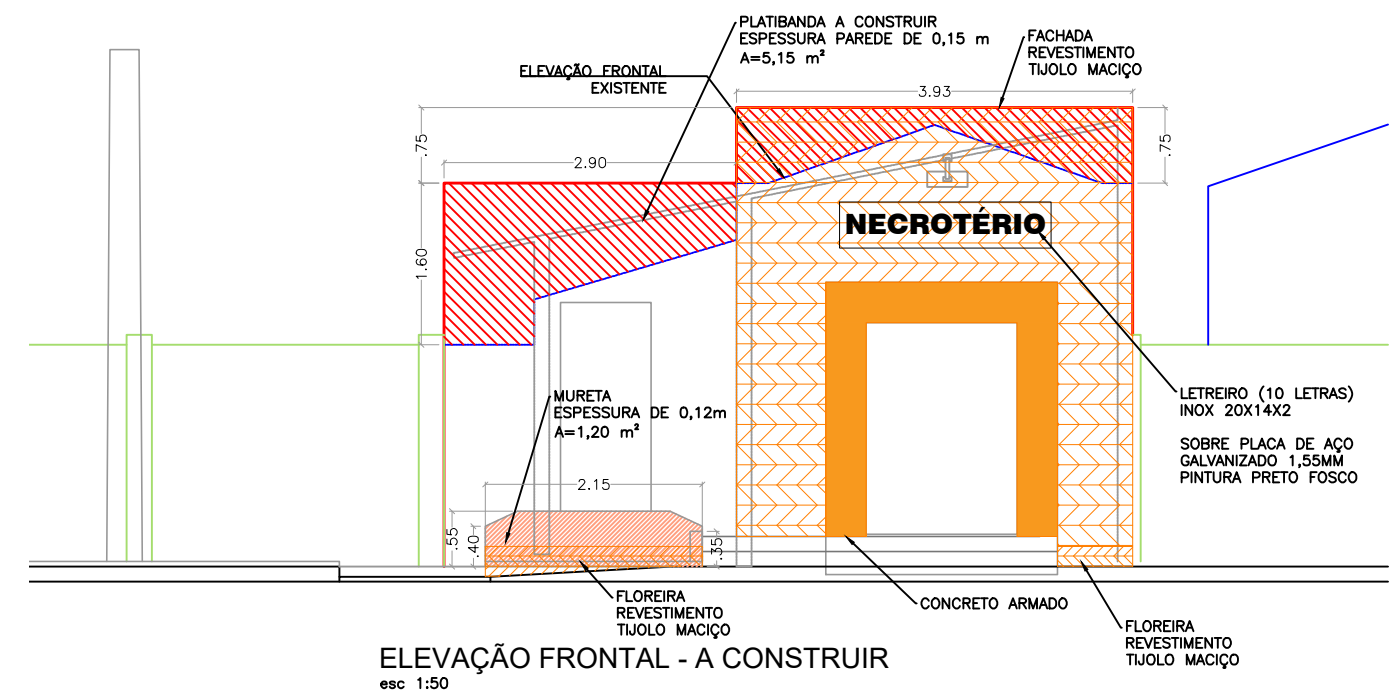


**PLANTA - A CONSTRUIR**  
esc 1:100



Projeto:  
 REFORMA NECROTÉRIO

Assunto: **A CONSTRUIR**  
**PLANTA E ELEVAÇÕES**

Local: HOSPITAL MUNICIPAL - NECROTÉRIO  
 RUA PELotas n 133  
 NAVIRAÍ - MS

N° Prancha:  
 04 / 07

Data:  
 MAIO/2022

Escala:  
 Indicado

Desenho:  
 Equipe

**JORGE LUIS DE LUCIA**  
 GERENTE DE OBRAS

Responsável Técnico:  
**LAIS MOTTA F. GANZAROLLI**  
 Arquiteta e Urbanista - CAU A100583-9