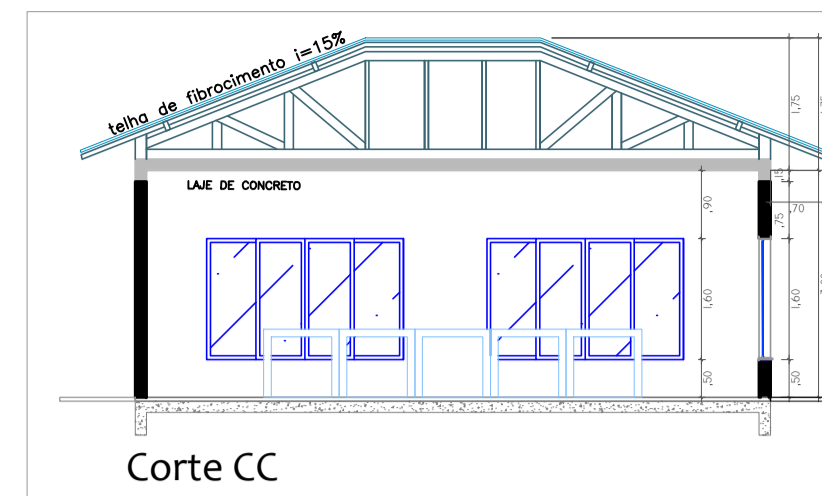
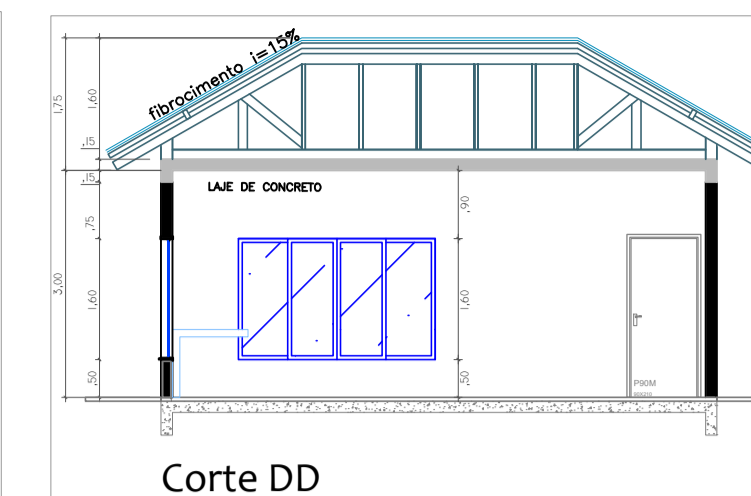


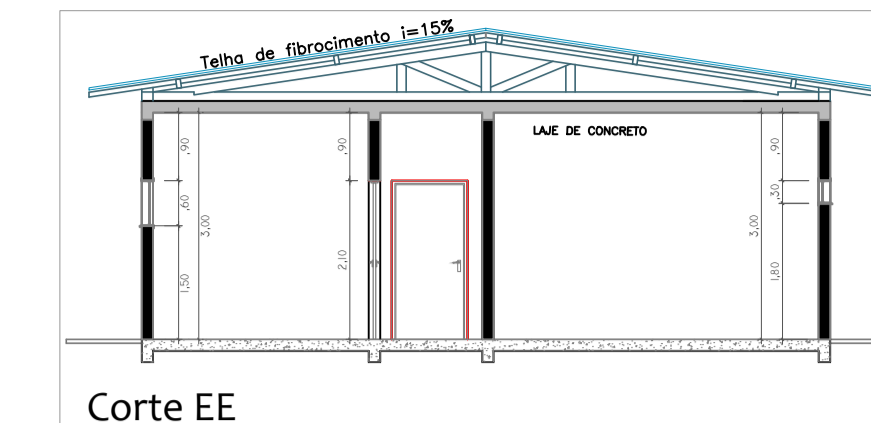
Fachada



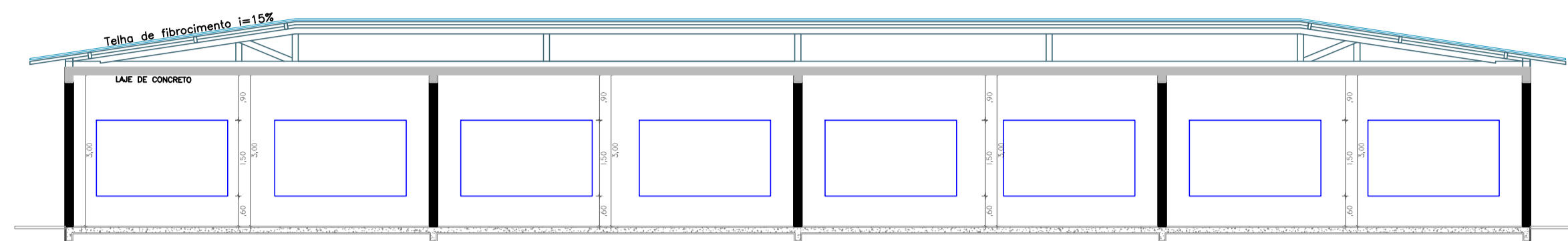
Corte CC



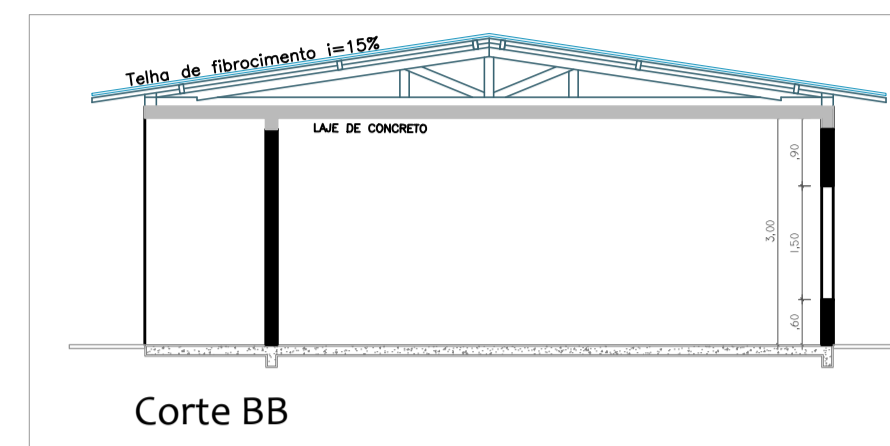
Corte DD



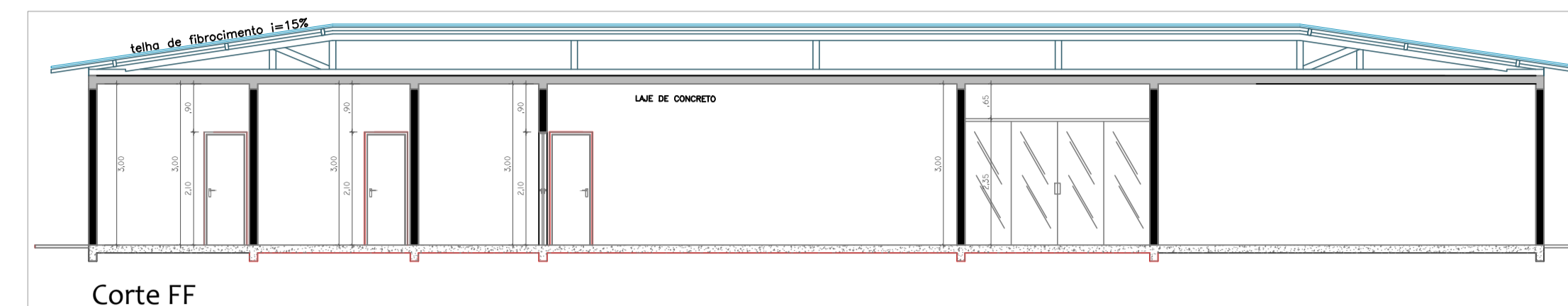
Corte EE



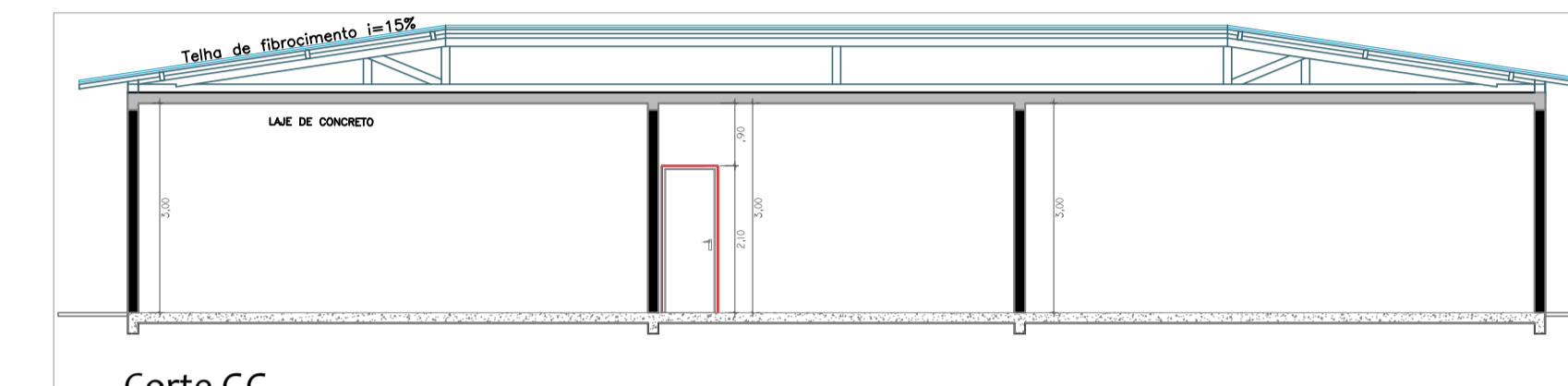
Corte AA



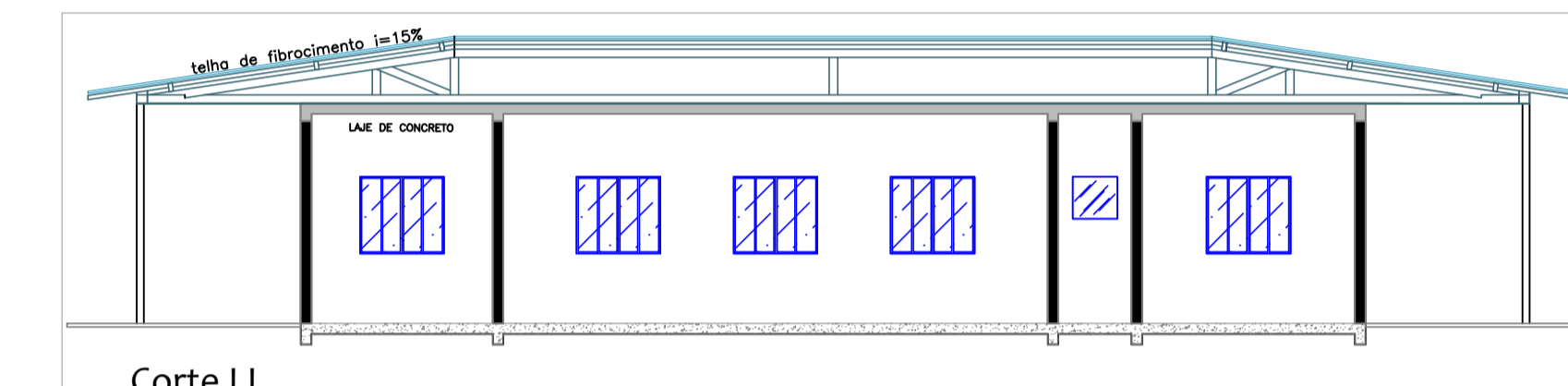
Corte BB



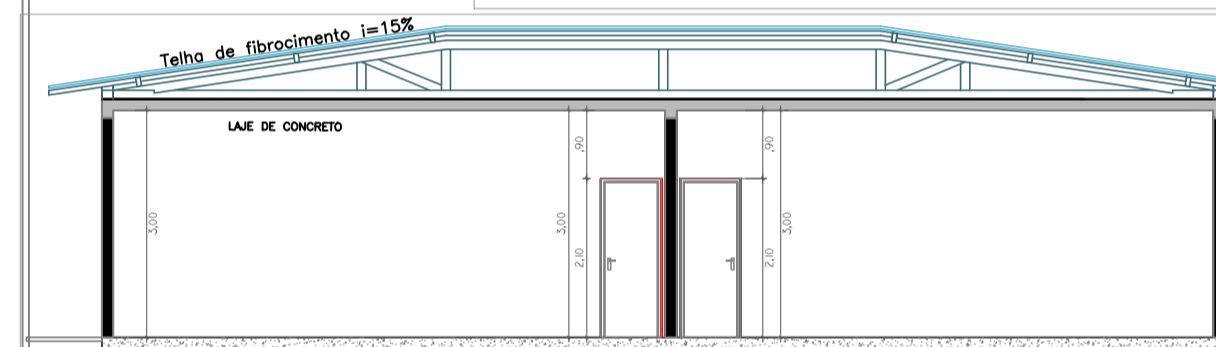
Corte FF



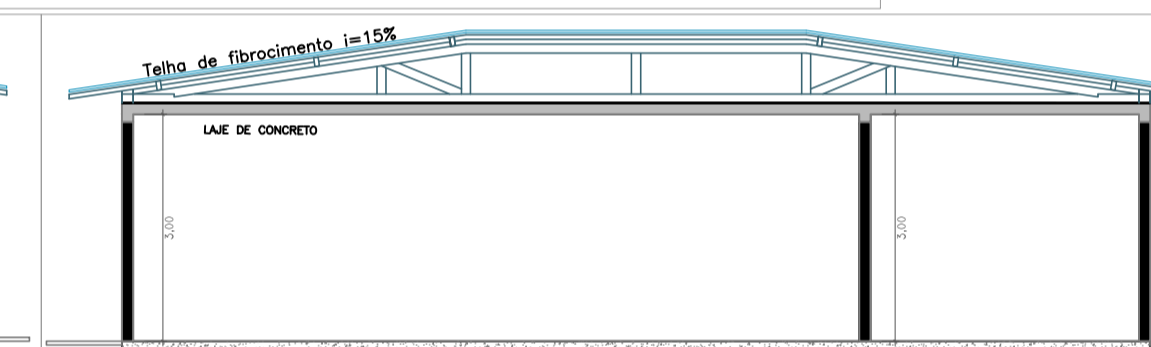
Corte GG



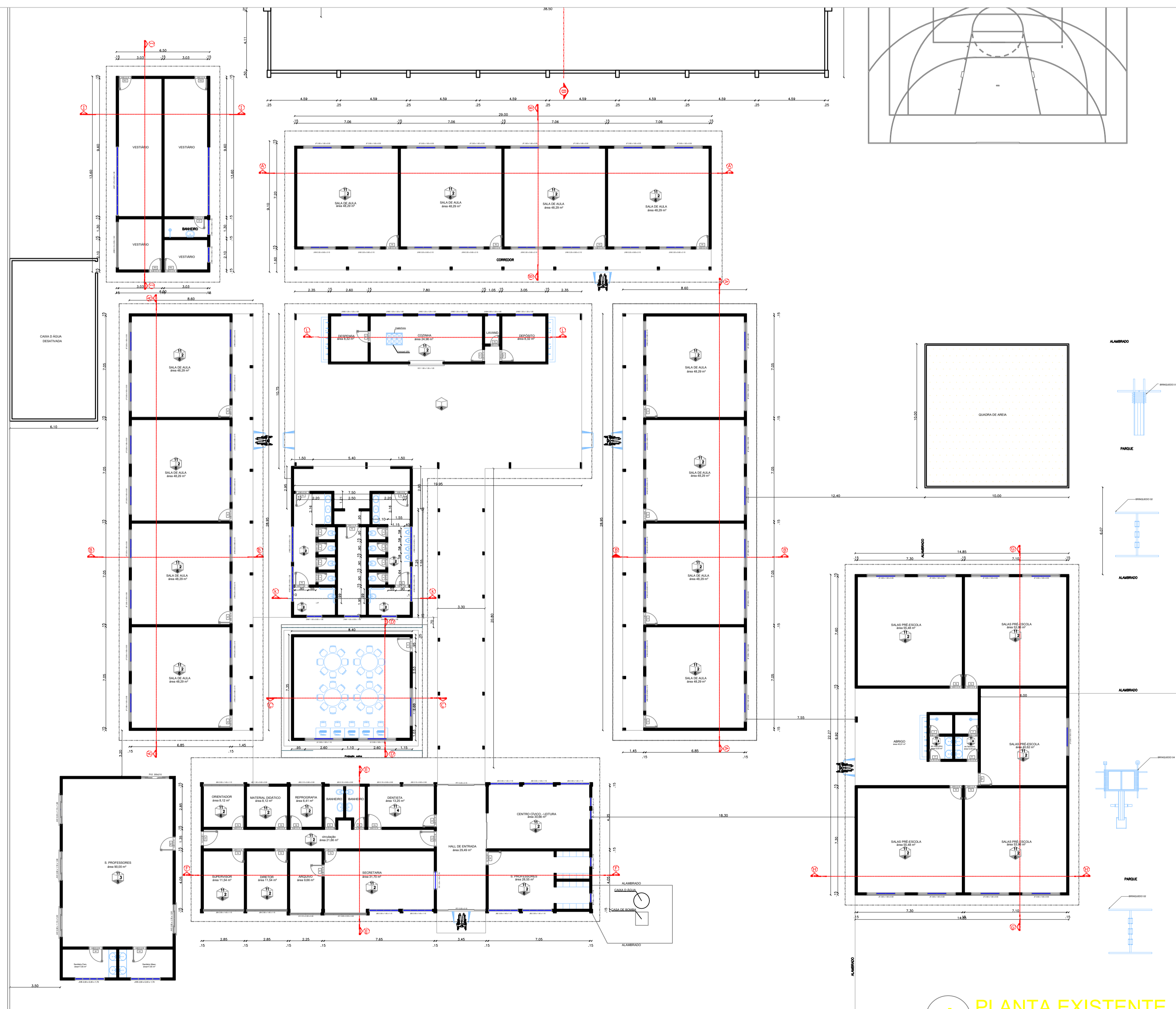
Corte LL



Corte HH

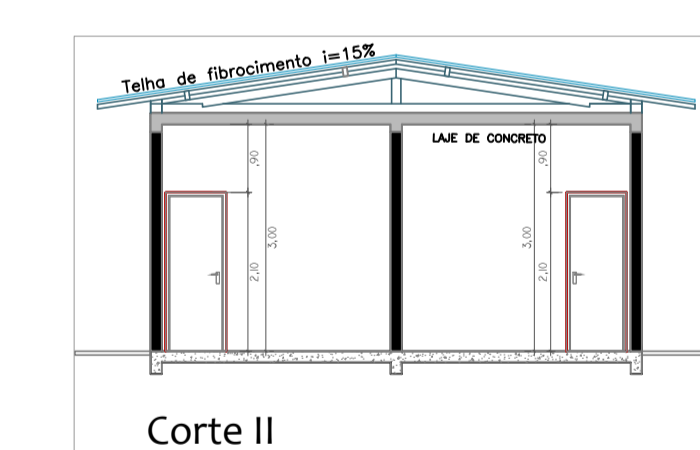


Corte JJ

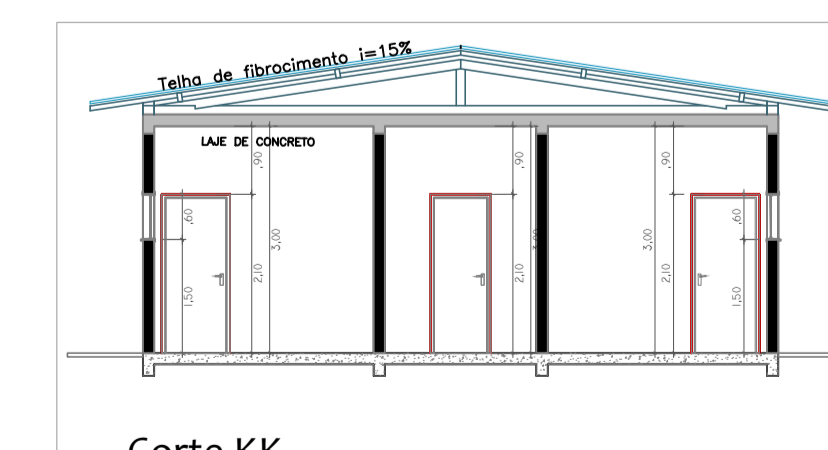


1 PLANTA EXISTENTE
ESCALA 1:175

GRADE



Corte II



Corte KK

APROVAÇÃO	
	
PREFEITURA MUNICIPAL DE NAVIRAÍ	
OBRA REFORMA ESCOLA ODÉRCIO NUNES	
LOCAL RUA JOSÉ G MENDONÇA, 1 - NAVIRAÍ/MS	ÁREA CONSTRUIDA 2329,02 m² ÁREA DO TERRENO 8509,84 m²
RESPONSÁVEL TÉCNICO DO PROJETO FLAVIO ROBERTO VENDAS TANUS Engº Civil - CREA 9432/D-MS	PREFEITO RHAIZA REJANE NEME DE MATOS CNPJ 03.155.934/0001-90
DISCIPLINA PROJETO ARQUITETÔNICO	
CONTEÚDO PROJETO EXISTENTE	FOLHA 1/4
ESCALA COMO INDICADO	DATA MAR/2021
CONVÊNIO	COORDENADAS 23°02'44" 4"S 54°11'59" 3"W