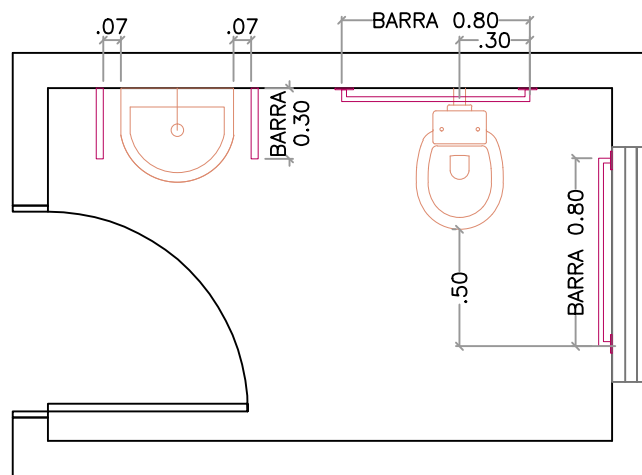


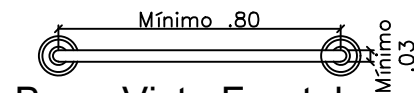
INSERIR:

- 2 BARRAS RETA DE 80cm EM APOIO AO VASO SANITÁRIO - INOX
- 1 KIT BARRA 'C' (2 und.) DE 30cm EM APOIO AO LAVATÓRIO - INOX
- 1 LAVATÓRIO DE LOUÇA COM COLUNA- BRANCO
- 1 VASO SANITÁRIO DE LOUÇA - BRANCO



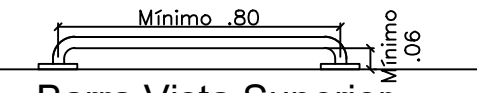
DETALHE 01 - SANITÁRIOS

esc 1:30



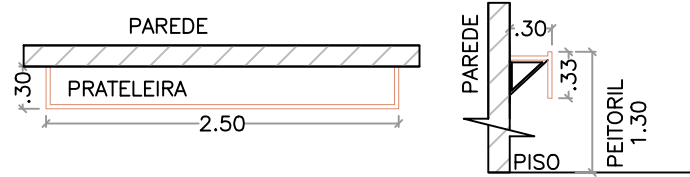
Barra Vista Frontal

esc 1:20



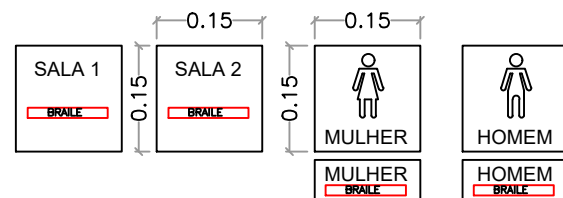
Barra Vista Superior

esc 1:20



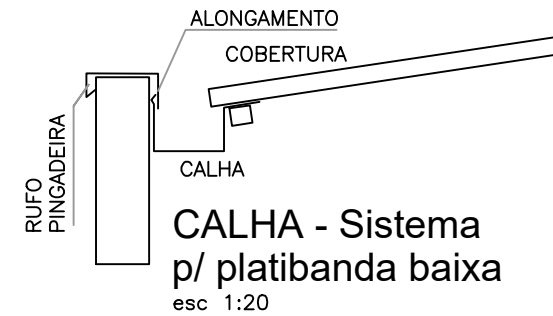
DETALHE 02 - PRATELEIRA DE MARMORE

esc 1:50



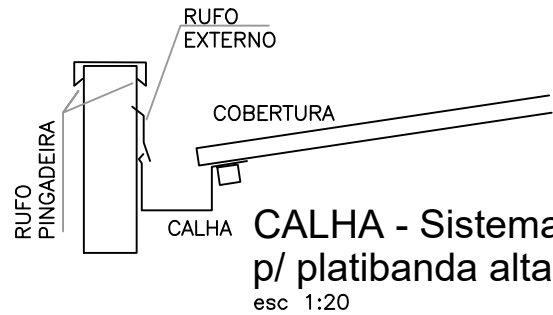
DETALHE 03 - PLACA TÁTIL

esc 1:10



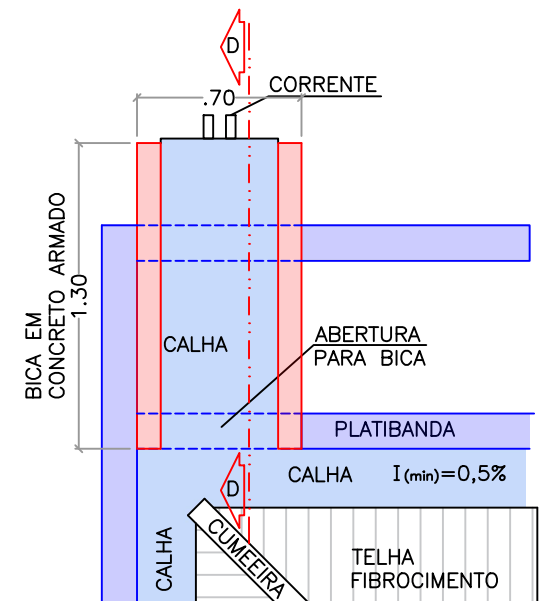
CALHA - Sistema p/ platibanda baixa

esc 1:20



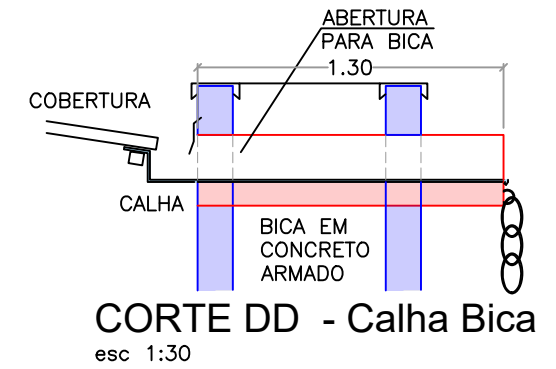
CALHA - Sistema p/ platibanda alta

esc 1:20



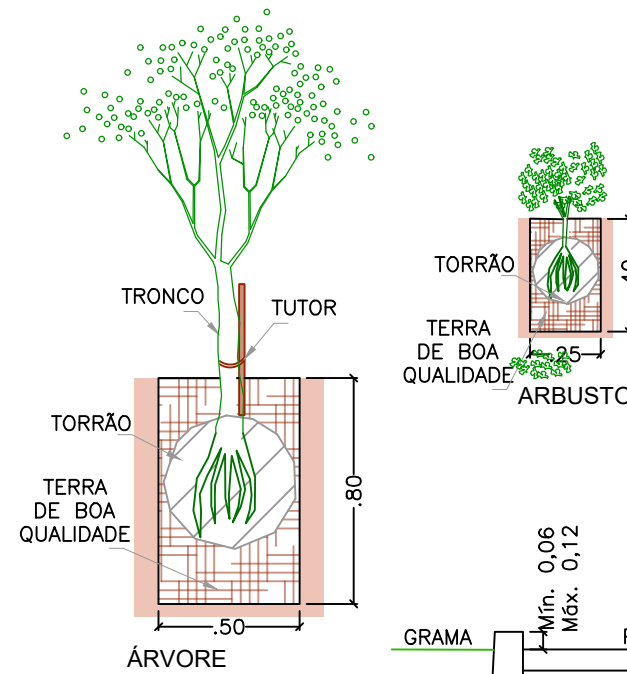
DETALHE 04 - Calha Bica Implantação

esc 1:30



CORTE DD - Calha Bica

esc 1:30

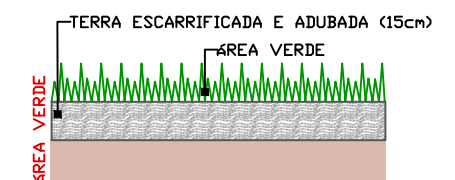
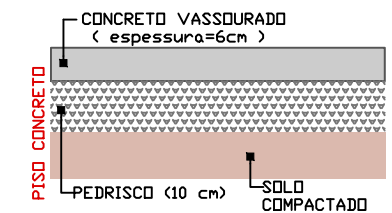
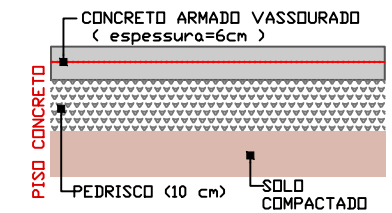


PLATIO

esc 1:25

GUIA

esc 1:20



| | |
|--------------------------------|-----------------------------|
| Projeto: CAPELA MORTUÁRIA | Nº Prancha: 6 / 8 |
| Assunto: DETALHES | Data: JANEIRO/2023 |
| Local: Av. Fátima do Sul 1-113 | Escala: Indicado |
| | Desenho: Equipe de Projetos |

| |
|---|
| RHAIZA REJANE NEME DE MATOS PREFEITA MUNICIPAL |
|---|

| |
|--|
| Responsável Técnico: LAIS M. F. GANZAROLLI Arquiteta e Urbanista - CAU A100583-9 |
|--|